

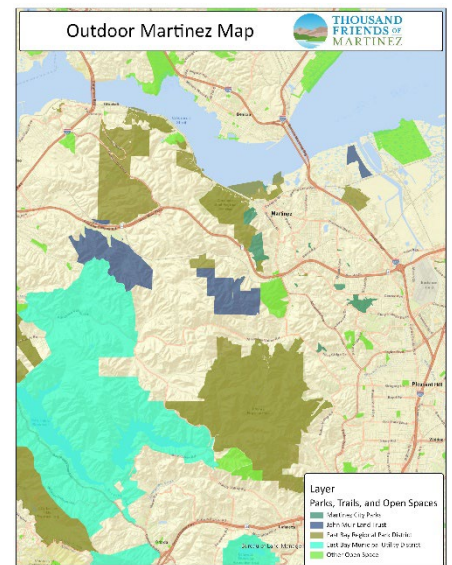


“Outdoor Martinez” Map

By Seth Adams, co-chair

Thousand Friends of Martinez has long believed that Martinez’ future lies in branding the city as a parks, trails and open space mecca, while attracting increasing numbers of visitors. To help with economic development efforts, we’re creating an “Outdoor Martinez” map to expand on that branding opportunity that Martinez is a parks and open space gateway.

My professional work relates to the Diablo Range stretching south 200 miles across 12 counties. While we have an embarrassment of riches of outdoor opportunities in the East Bay, as you go south down the San Joaquin and Salinas Valleys, there are lots of places where there are just one or two trailheads or parks— or even fewer— within 30 to 60 minutes.



Our “Outdoor Martinez” map will include at least 100 parks, trails, and open spaces— all within 15 minutes of downtown Martinez— including a national historic site, five regional parks, eight regional trails, four different watershed areas and several dozen city parks and open spaces— and show you how to get to them. Martinez’ outdoor environment and recreational opportunities are really what characterizes our hidden gem of a city.

Located along the scenic Carquinez Strait, Martinez is a historic East Bay city that serves as a vital gateway to an incredible wealth of parks and open spaces. Its natural beauty is framed by rolling golden hills, a picturesque waterfront, and a vibrant network of parks that provide residents and visitors alike with abundant recreational opportunities. This unique setting, which

Thousand Friends of Martinez
PO Box 225, Martinez, CA 94553
FPPC# 1381454
<https://thousandfriendsofmartinez.org>

blends maritime charm with the rustic grandeur of inland valleys, makes Martinez a true natural gem.

The Martinez waterfront, a 135-acre expanse on the Carquinez Strait, is a centerpiece of the city's beauty. Here, the Radke Martinez Regional Shoreline Park offers a peaceful and clean environment with walking paths and marshes teeming with diverse birdlife. The Martinez Waterfront Park is another popular attraction, featuring bocce ball courts, a skate park, and fields for various sports, all set against a backdrop of stunning water views. This shoreline is where the Bay Area Ridge Trail and the San Francisco Bay Trail converge, providing a unique point of access for hikers and cyclists to explore the region.

Beyond the shoreline, Martinez is a launchpad to the majestic Briones Regional Park, a 6,117-acre preserve of oak-studded grasslands and rolling hills. With multiple staging areas accessible from Martinez, visitors can embark on hikes with panoramic views of the Sacramento River, Mount Diablo, and the Diablo Valley. Briones' extensive trail network caters to all skill levels, offering a serene escape and opportunities to spot wildlife.

The recently opened Alhambra Hills Open Space further expands the city's natural assets, preserving a historic ridgeline with incredible vistas.

Martinez's commitment to preserving its open spaces ensures that its beauty is protected for future generations. The legacy of conservation is fittingly connected to the city's most famous resident, naturalist John Muir. His historic home is a testament to the area's rich history and reverence for nature.

Whether exploring the waterfront, venturing into the hills of Briones, or strolling through a local park like Hidden Lakes, Martinez offers a harmonious blend of natural splendor and outdoor recreation, cementing its reputation as a premier open space gateway in the Bay Area.

We'll unveil a draft of our new map at our Friends Fest event on October 26 and ask you to help with your favorite places that we might have missed.

Thousand Friends of Martinez
PO Box 225, Martinez, CA 94553
FPPC# 1381454
<https://thousandfriendsofmartinez.org>